

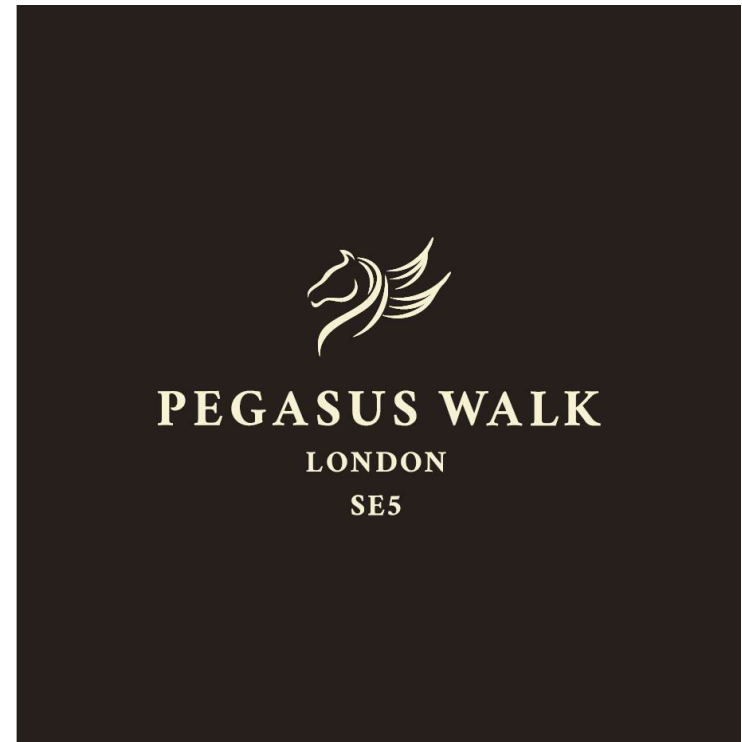


Pegasus Walk, SE5 | £495,000

02087029999

newhomes@pedderproperty.com

pedder
NEW HOMES



In General

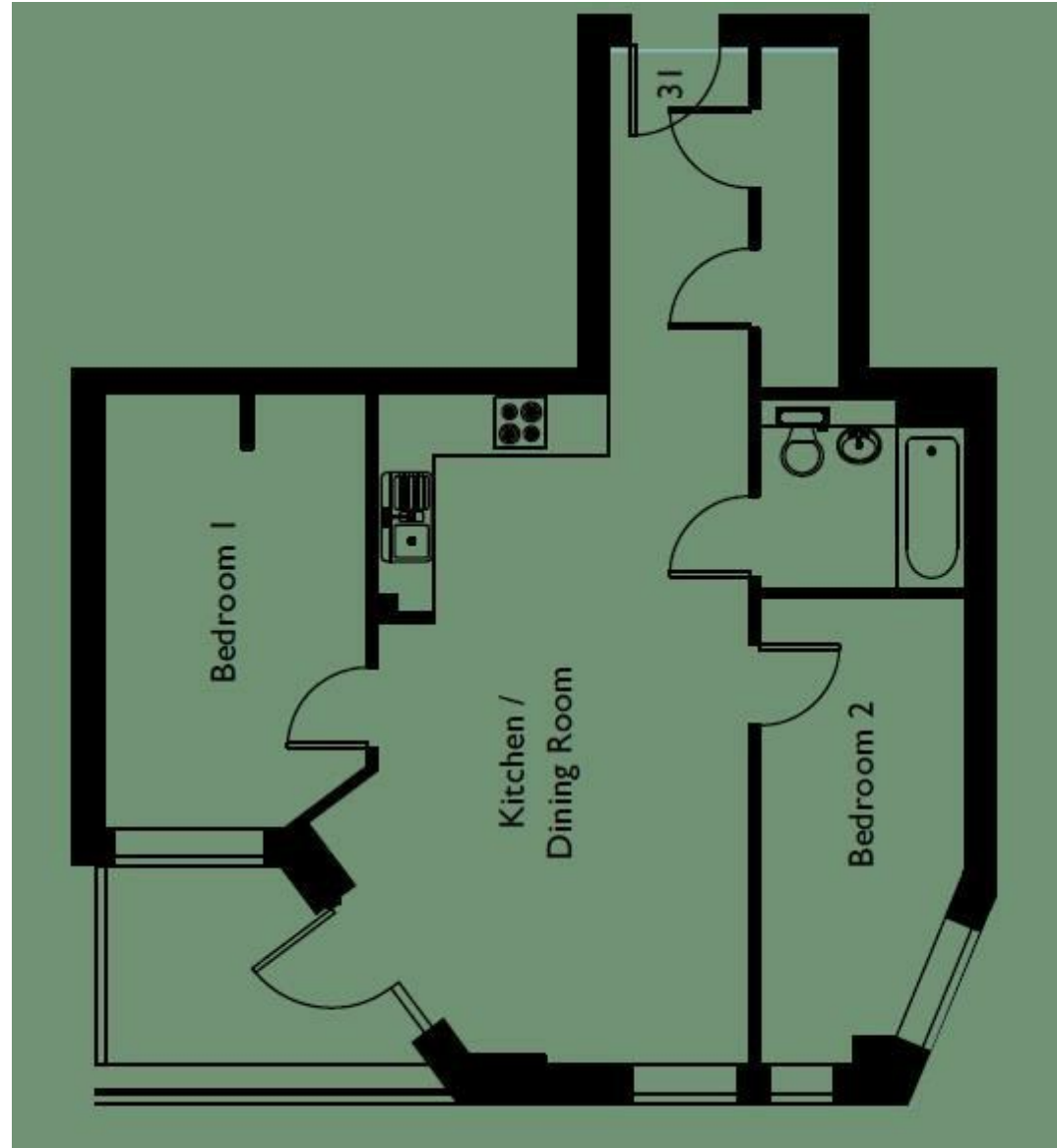
- 2 Bedroom Apartment
- 999 year Lease
- 10 year structural warranty
- Communal Roof Terrace
- Lift Access
- Underfloor Heating
- Moments from Burgess Park
- Excellent transport links
- Cycle Storage
- Private Balcony

In Detail

Pegasus Walk is a brand-new luxury development in the heart of Camberwell, comprising studio, one, two and three-bedroom apartments.



Floorplan



Energy Efficiency Rating	
	Current
Very energy efficient - lower running costs	
102 plus) A	
81-101) B	
69-80) C	
55-68) D	
39-54) E	
21-38) F	
1-20) G	
Not energy efficient - higher running costs	
England & Wales	EU Directive 2002/91/EC

Pedder Property Ltd trading as Pedder for themselves and for the vendor/landlord of this property whose agents they are, give notice that (1) these particulars do not constitute any part of an offer or contract, (2) all statements contained within these particulars are made without responsibility on the part of Pedder or the vendor/landlord, (3) whilst made in good faith, none of the statements contained within these particulars are to be relied upon as a statement of representation or fact, (4) any intending purchaser/tenant must satisfy him/herself by inspection or otherwise as to the correctness of each of the statements contained within these particulars, (5) the vendor/landlord does not make or give either Pedder or any person in their employment any authority to make or give representation or warranty whatsoever in relation to this property.